

Golf Society & Corporate Golf Events

Golf Days Designed to meet the individual's needs

Thank you for expressing an interest in Trent Lock for your forthcoming golf event, society golf or away-day.

Both the 18-Hole River Side Course and the 9-Hole Canal Side course will test the regular golfer yet still be relatively gentle on those new to society golfing, offering both a test of skill and a great deal of enjoyment.

Our aim is to offer flexibility with great hospitality and unrivalled off course facilities guaranteed to enhance your day.



We welcome Golf Societies
7-days a week



Trent Lock

Home to WILLIAM HUNT

Trilby Tour 2018 & 2019

Nottinghamshire —As televised



Nestling between the picturesque locks of the River Trent, Trent Lock is within easy reach of major motorway networks, East Midlands train links and Airport.

Logistically the location is ideal for those travelling from the north or south and promises not to disappoint anyone looking for a great day out.

As the course has matured over the years to offer a challenging round, the facilities remain modern and boast one of the largest on-course retail golf superstores and custom fit centre making Trent Lock a golfer's haven.

CORPORATE GOLF IS OUR SPECIALITY



Corporate golf events and charity fund raising days are our speciality and we are proud to have hosted some awesome events.

Whether it's a memorial or charity event, or a small group looking for a great day out, we can plan you a successful and enjoyable day.

Each Society and Corporate event have their own expectations and unique way of creating their perfect day, and with this in mind we welcome the opportunity to adapt our golf packages to meet with your exact requirements.

With over 30-years of hosting events, we have it bunkered

AFTER THE GOLF it's time for the social



At Trent Lock, once the golf is over the enjoyment does not stop there.

The friendly atmosphere of the clubhouse and modern facilities entices everyone to Locks Bar where draught beers and good homecooked food is served all day which has earned us a deserving reputation with regulars and visiting societies.

Whether you are planning a hearty meal, a prime grill or chefs carvery, our aim is for you to ***leave satisfied.***



TRENT LOCK GOLF & COUNTRY CLUB

Lock Lane | Sawley | Long Eaton | NOTTINGHAM | NG10 2FY | Tel: 0115 9464398 | Contact: EMAIL enquiries@trentlockgolf.com | www.trentlock.co.uk

PRACTISE MAKES PERFECT



We are a club who constantly evolve with new concepts and continue to invest in facilities to enhance your game and visit to Trent Lock.

We now boast practise facilities with cutting edge technology introducing **Trackman Range** to each of our 22-Bays which is undoubtedly the **industries best virtual golf.**

An interactive and engaging experience that offers you a whole new way to practise, play and have fun for every skill level.

With one of the largest on-course golf retail stores and custom fit centre operated by American Golf, Trent Lock is a golf destination that's well worth a visit.



*Golf evolves with the best
practise technology
guaranteed to enhance your visit*

PLANNING YOUR VISIT

All our 'Society Packages' are designed to cover all aspects enhancing and organising your day

Weekday Society Packages 2024

Excludes Public/ Bank Holidays

Society Weekday Golf Only *minimum 12 @ £26*

Weekday Golf + Bacon Bap + Tea/Coffee @ £31.50

Weekday Golf + Full English Breakfast + Tea/Coffee @ £37.50

Weekday Society Golf + Pie, Chips, Peas @ £40.00

For alternative meal options, discuss your plans with us

Weekend Society Packages 2024

Including Public/ Bank Holidays

Society Golf Weekend Only *minimum 12 @ £36*

Weekend Golf + Bacon Bap + Tea/Coffee @ £39.50

Weekend Golf + Full English Breakfast + Tea/Coffee @ £47.00

Weekend Society Golf + Pie, Chips, Peas @ £48.50

For alternative meal options, discuss your plans with us



Leave feeling satisfied

PRE-BOOK

SUNDAY CARVERY

Our renowned Sunday Roast

ADD TO YOUR CHOSEN

Golf Society Package

Served until 4:30pm

From £14.50

PLANNING A CORPORATE GOLF EVENT or AWAY-DAYS

We have the perfect venue for your golf event or away-day

Our dedicated team know how to put together a successful and memorable occasion whether you are planning a **corporate golf event**, **charity golf day** or simply an **'away-day'** with your club or society members. The aim is to make it enjoyable.

From the moment you arrive, let us guide you through managing your teams through to the prize presentation and meal afterwards.

As a guide 2024

Weekday Tariffs below include our renowned Chefs Carvery Menu

Minimum 36 players | Shotgun Start for 72 or 88 players – ask for tariffs

Exclusive space to fulfil your corporate hospitality plans & prize giving

Course signage - nearest the pin, longest drive

18-Hole Golf - Bacon Bap + Tea/Coffee

Include a Chefs 2-Course Carvery @ £59.95 *inclusive vat*

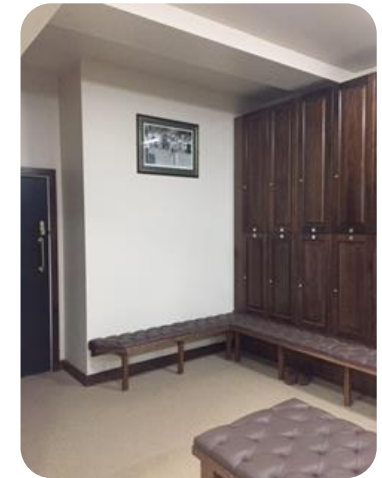
Or make it a 3-Course Carvery @ £64.95 *inclusive vat*

Includes Driving Range – warm up balls with Trackman Range technology



Society & Corporate Bookings 'Terms & Conditions'

1. **Cancellations/Postponements**
 - i) In the event of a cancellation the client will forfeit any deposit(s) paid and full balance of *pre-booked arrangements & services.
 - ii) All cancellations must be confirmed in writing by email.
2. **Confirmation of final numbers** is required 7 days prior date of visit.
 - Tee times, food options and *pre-booked arrangement & services (*example* golf cart hire) must be paid in advance of golf or at check-in.
 - No charge for *pre-booked services if cancelled in writing **more than 48 hours prior to event date**, please ensure you have a cancellation confirmation reference. **NOTE:** this excludes society packages and tee reservations and pre-ordered catering requirement confirmed 7-days prior. (Refer to confirmation of final numbers clause 2)
3. **Handicaps**
An official handicap certificate is not required, however, if a player's ability in the opinion of our Course Marshall or any member of our Golf Team is affecting other golfer's enjoyment due to slow play, for example, they will be asked to leave the course without refund.
4. **Rules & Etiquette**
All players will be expected to know and abide by the rules of golf and any local rules set out by Trent Lock Golf & Country Club.
5. **Appropriate dress code**
Appropriate dress code is required whilst playing the course.
6. **Golf Bag & Equipment**
Each player must be equipped to play with their own bag and clubs when playing the course. Sharing of golf bags and clubs are strictly prohibited.

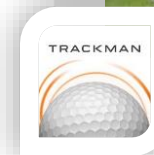


Amenities & Additional Facilities

TRACKMAN RANGE TECHNOLOGY -24 bays - practice before play or enjoy the Trackman range technology and transport your game to play any course worldwide. (**fees apply)

If you require pre-booked services, please confirm in writing at least 21-days prior to reservation date to ensure availability.

- Course signage: Nearest the Pin marker, Longest Drive markers
- Locker Hire - Our locker rooms are spacious and equipped with showers and gent's lockers for day hire
- Practice Area - putting green & short game practice area.
- Golf Cart Hire (**fees apply from £27.50) - to lock-in the rate, advance payment required to secure reservation of golf cart.
- Trolley Hire (**fees apply)



SOCIETY & CORPORATE GOLF BOOKING FORM

Society Event Date [____/____/____] ARRIVAL [ETA_____] # Tee Time [_____]

EXPECTED Numbers: [____] + *TLGC Members [____] + *PGA Professional [____] *Please confirm full details by email. Please Note: We offer no concession rates for County Card holders.

Please select: [] * golf only [] Weekday Golf Package [] Weekend/Public Holiday Golf Package £ _____ Fee/Bespoke Quote per person

Society Package [_____] Menu choice [_____] Vegetarian Option [_____]

Lead/Contact Name _____ Contact Number: _____ Society Name: _____

ADDRESS _____

E-mail: _____

TO BOOK:

Following your booking enquiry, a booking deposit is required to secure your tee reservation and society golf booking. All tentative enquiries are released 7-days following enquiry without receipt of booking deposit.

BOOKING DEPOSIT

1. A *non-refundable* deposit of **£100 is required** to secure your Society Booking OR ***£20 non-refundable deposit per society guest for 'golf-only' society packages.**
Bank Transfer : Account Name 'Trent Lock Golf Centre' Sort Code : 20-63-25 Account Number : 43858316 To pay by credit/debit card, please contact us.
2. **Final Numbers to prepared balance due and dietary requests are required 7-days prior to booking date.**
3. Full settlement of balance due is required at 'Check-In' and applies to all confirmed guests.
4. Prior notification of players who are club members of Trent Lock GC and PGA Professional must be confirmed 7-days prior with final numbers.
No adjustments can be made to balance once this time lapses.

BALANCE:

Settlement of pre-booked services and confirmed numbers are due 7-days prior to secure reservation

Cancellations within 7-days of booking date will be charged in full. (*Please refer to Booking deposit #clause 2 above*)

CHECK-IN

Please arrive at least 20-minutes prior to your *estimated time of arrival* (ETA) for your chosen society package to organise settlement for additional guests and pre-booked services.

TRENT LOCK GOLF & COUNTRY CLUB

Lock Lane | Sawley | Long Eaton | NOTTINGHAM | NG10 2FY | Tel: 0115 9464398 | Contact: EMAIL enquiries@trentlockgolf.com | www.trentlock.co.uk